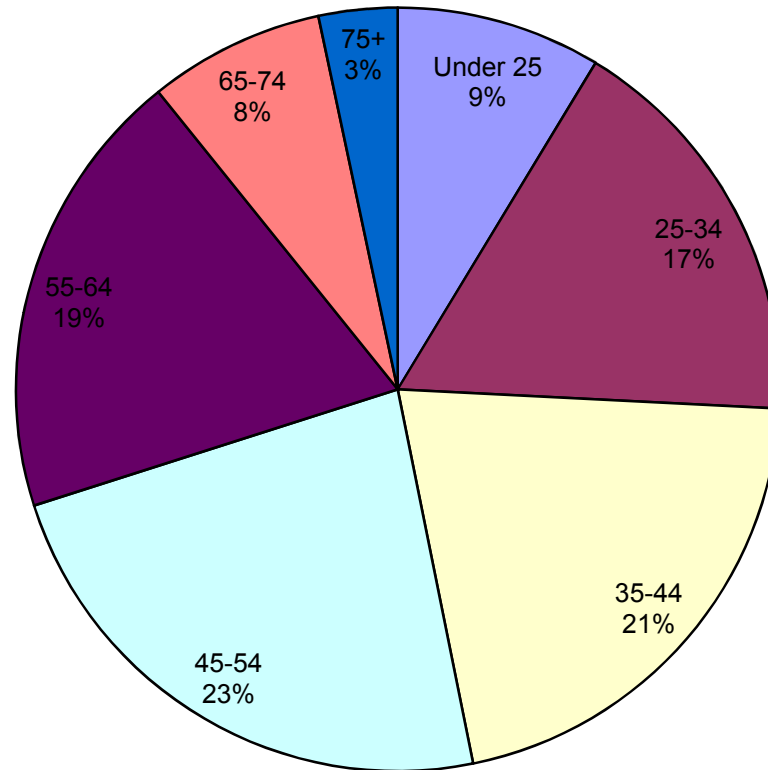


CCHA 2008 Needs Assessment Survey Results: Respondents Age

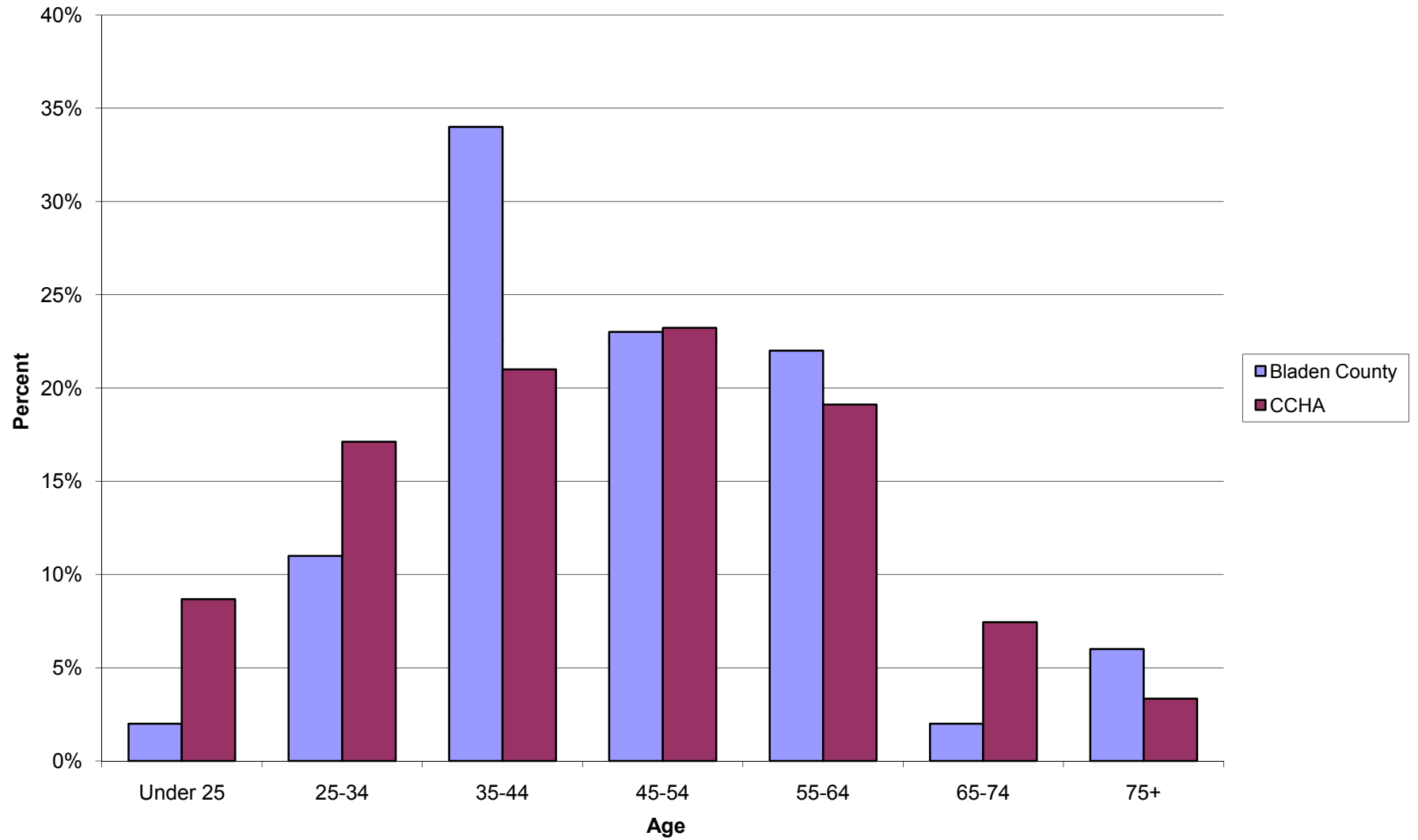
<u>County</u>	<u>Age</u>						
	<u>Under 25</u>	<u>25-34</u>	<u>35-44</u>	<u>45-54</u>	<u>55-64</u>	<u>65-74</u>	<u>75+</u>
Bladen County	2%	11%	34%	23%	22%	2%	6%
Brunswick County	3%	7%	10%	15%	35%	24%	6%
Columbus County	16%	28%	18%	18%	16%	3%	1%
Horry County	7%	19%	22%	23%	21%	6%	2%
New Hanover County	10%	23%	17%	22%	17%	7%	4%
Pender County	10%	9%	17%	30%	19%	8%	7%
Robeson County	19%	20%	20%	18%	13%	7%	3%
Sampson County	4%	13%	26%	29%	18%	8%	1%
Scotland County	7%	24%	25%	31%	11%	2%	0%
CCHA	9%	17%	21%	23%	19%	7%	3%

CCHA Region

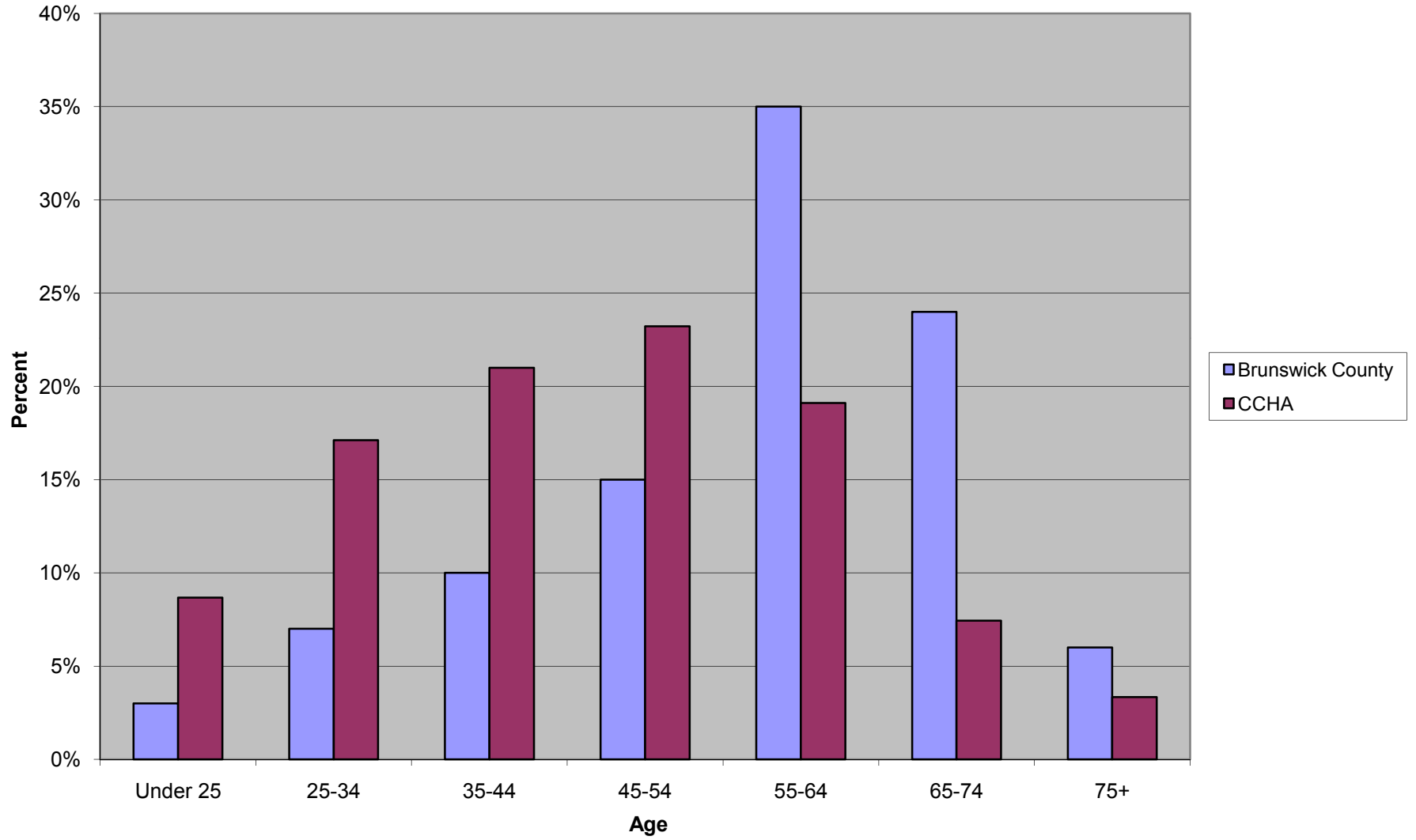


■ Under 25 ■ 25-34 □ 35-44 □ 45-54 ■ 55-64 ■ 65-74 ■ 75+

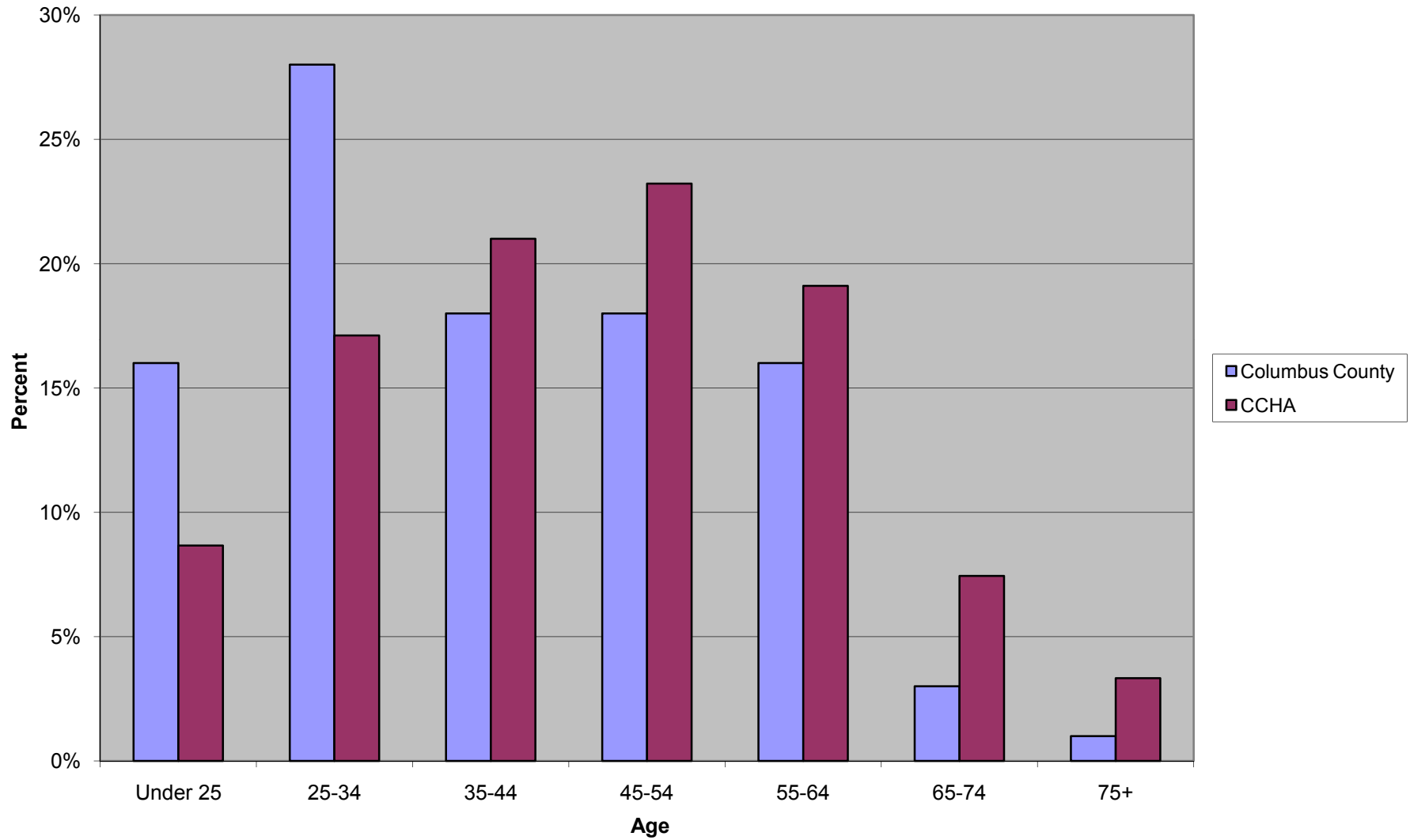
Bladen County



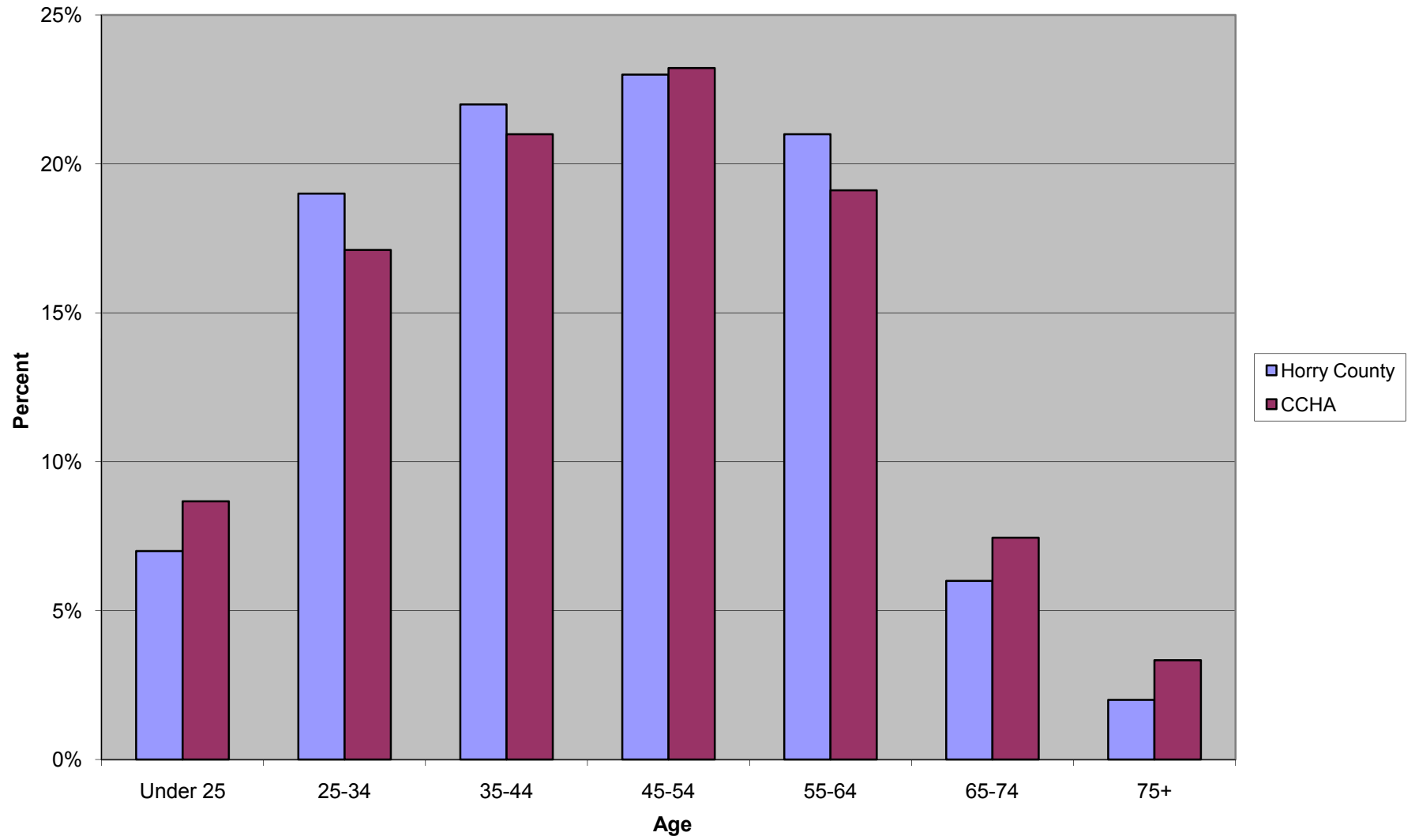
Brunswick County



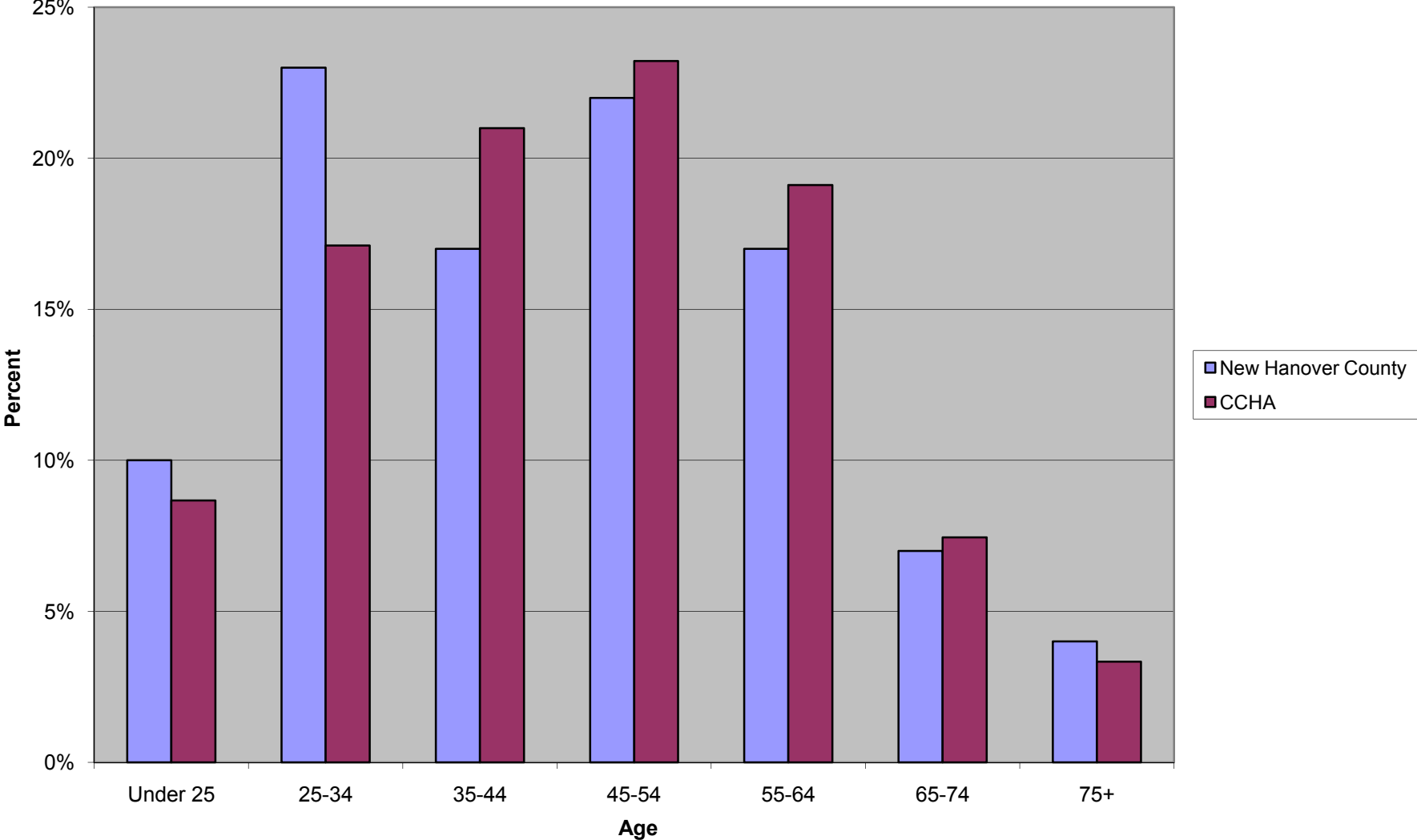
Columbus County



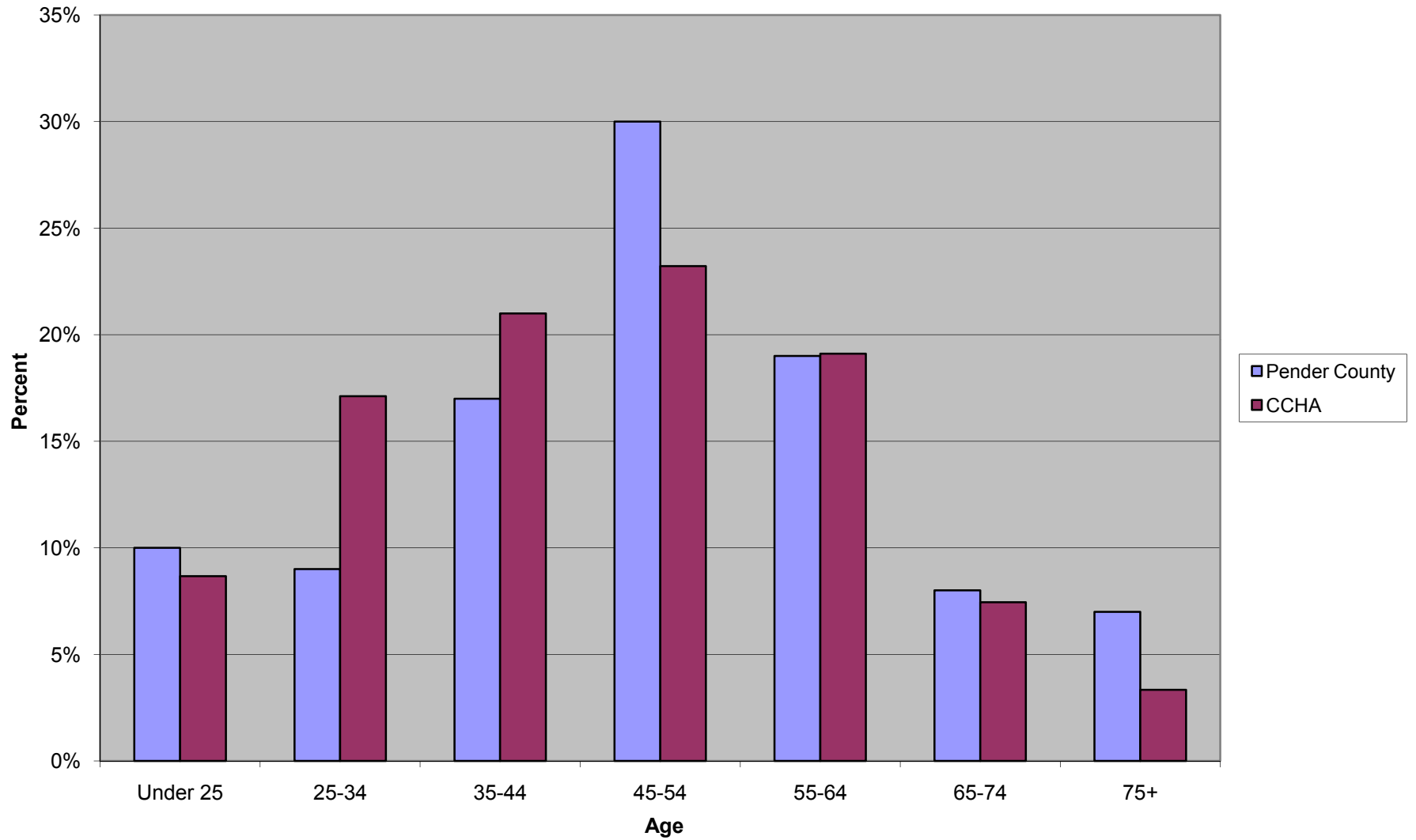
Horry County



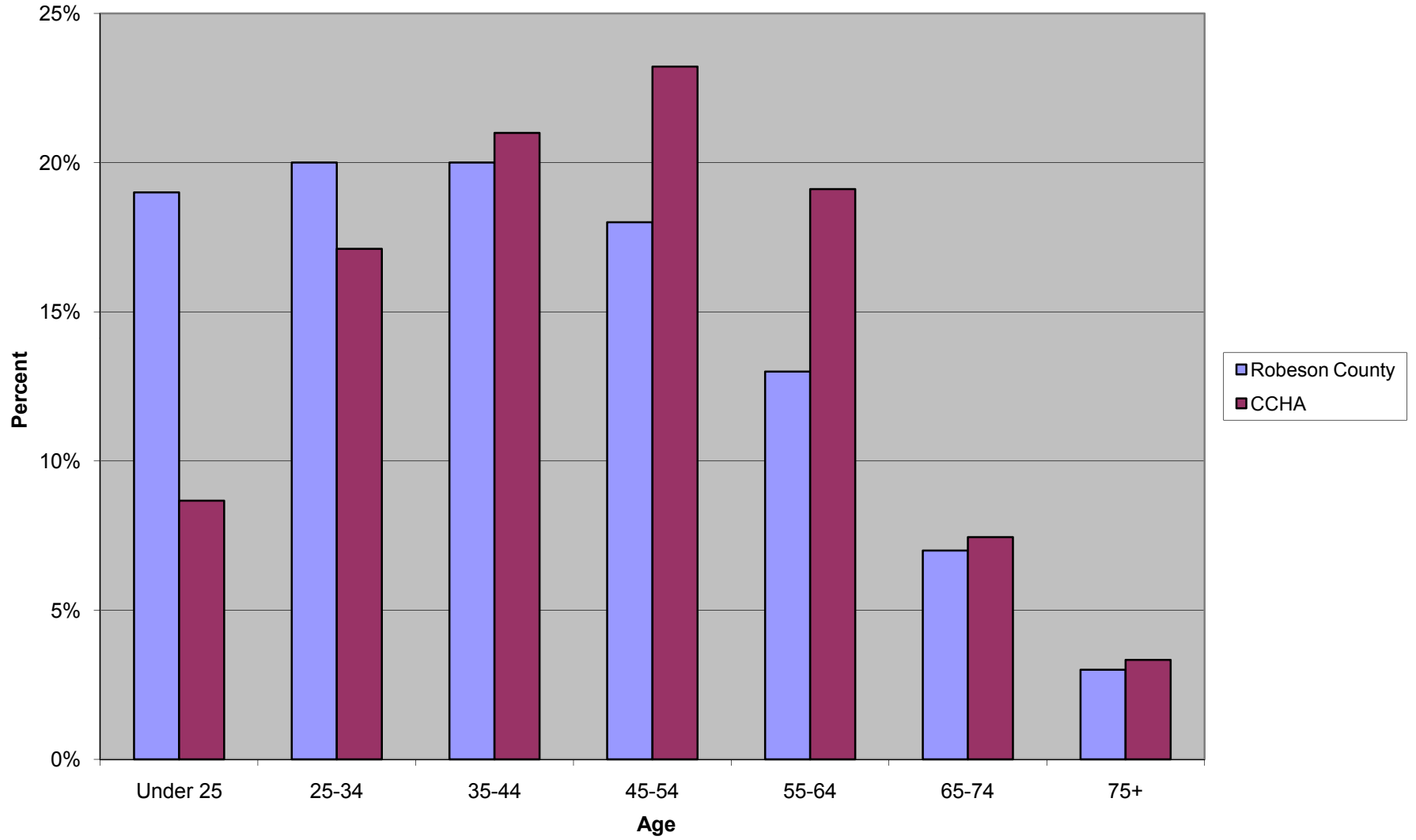
New Hanover County



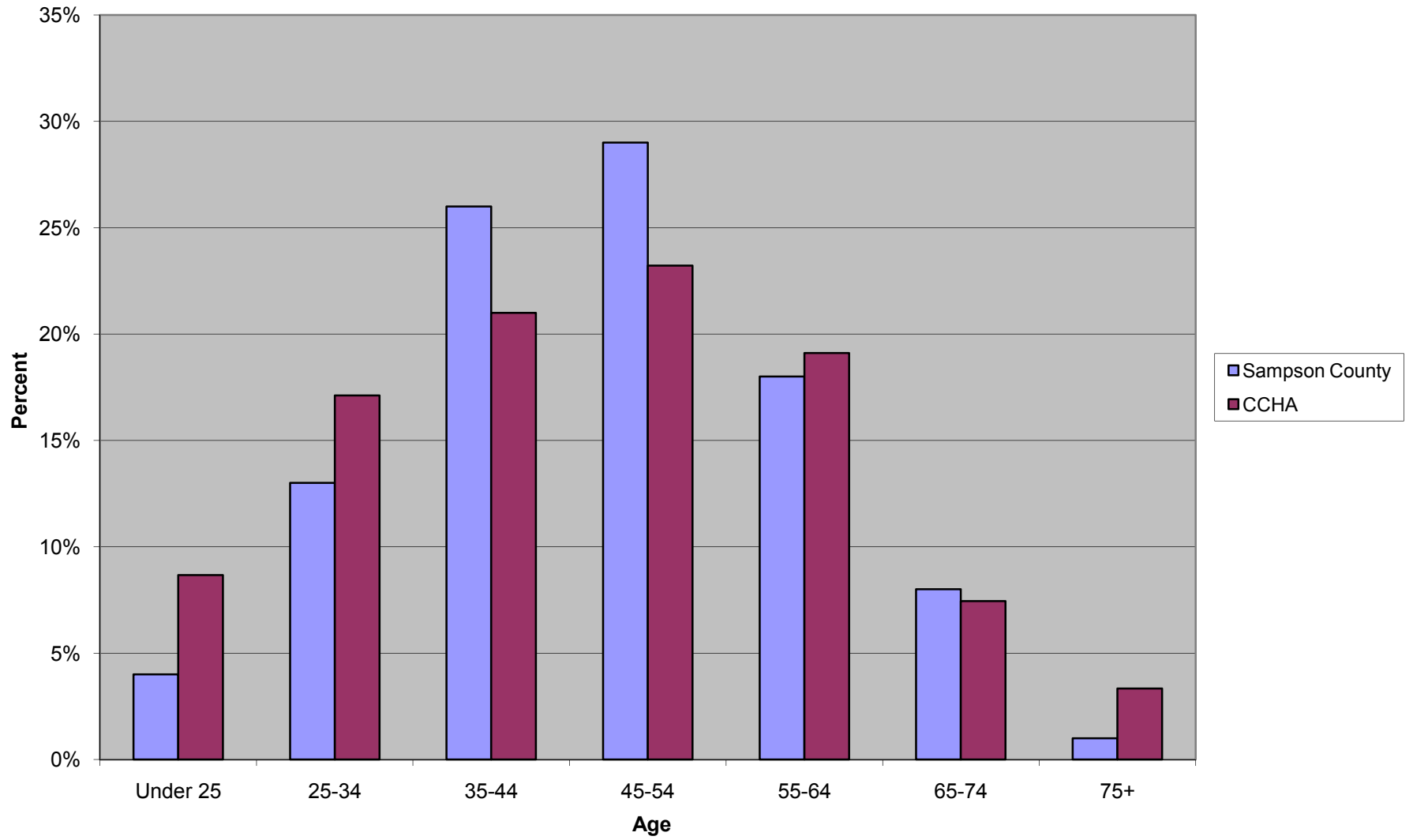
Pender County



Robeson County



Sampson County



Scotland County

